

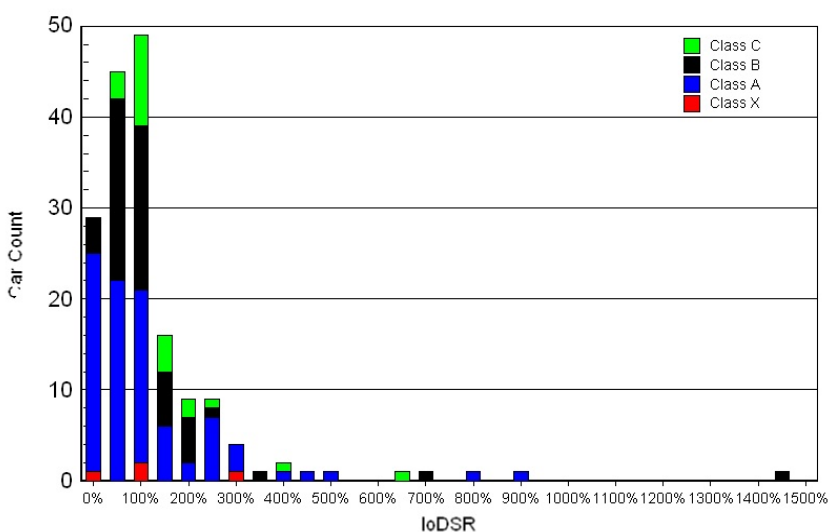
Analysis of the Results for Team Tinyvette at the 2012 Sears Pointless

Copy of main data then analyzed for IODSR

Min: 3.57%
 Max: 1460.00%
 Average: 147.65%

Expectations

Above: 48 28.07%
 Below: 74 43.27%
 At: 49 28.65%
 171



Speed Ranking	IODSR	Position	No.	Name	Year	Make	Model	Country	Age of Car	Class	Laps	Penalty Laps	Best Lap	In Lap	Best Speed	Total Time	Laps Difference	Best Time (sec)	Total Time (sec)	RTOT
3	3.57%	84	552	The Cannonball Bandits	1989	Toyota	Supra	Japan	23	A	212	0	2:04.962	117	60.50	14:25:13.762	-8	124.962	51914	51.14%
4	7.55%	53	737	Sour Aviation Racing	1985	Ford	Mustang	USA	27	A	234	6	2:05.411	178	60.28	14:23:22.572	14	125.411	51803	56.65%
5	6.10%	82	2	Charity Challenge	1992	BMW	E30	Germany	20	A	214	0	2:06.438	171	59.79	14:25:28.826	-6	126.438	51929	52.24%
6	300.00%	2	15	Cerveza Racing	1983	BMW	533i	Germany	29	A	281	0	2:06.706	194	59.67	14:23:45.968	61	126.706	51826	68.74%
7	31.82%	22	510	TEAM 510	1972	Datsun	510	Japan	40	A	258	0	2:07.327	221	59.37	14:24:46.464	38	127.327	51886	63.42%
8	29.63%	27	86	The Faustest Team	1986	BMW	325	Germany	26	A	255	0	2:07.449	227	59.32	14:23:39.129	35	127.449	51819	62.74%
9	225.00%	4	242	Faulknor Auto Racing Teameam	1985	BMW	535	Germany	27	A	275	0	2:07.629	166	59.23	14:25:40.295	55	127.629	51940	67.76%
10	125.00%	8	98	Clergy MC	1991	Nissan	NX	Japan	21	A	270	9	2:07.980	224	59.07	14:25:53.185	50	127.980	51953	66.71%
12	133.33%	9	18	Cerveza Racing	1986	Porsche	944	Germany	26	A	269	0	2:08.412	185	58.87	14:23:29.219	49	128.412	51809	66.69%
13	15.29%	85	144	Mutter Fokker Motorsports	1990	BMW	325	Germany	22	A	211	2	2:08.556	121	58.81	14:25:16.432	-9	128.556	51916	52.37%
14	233.33%	6	161	Lipstick on a Pig	1991	Nissan	Sentra	Japan	21	A	271	3	2:08.772	229	58.71	14:24:07.318	51	128.767	51847	67.37%
16	30.77%	52	62	Battleship Blue - Unsinkable Sh*tbox Alliance	1991	Nissan	300zx	Japan	21	A	236	5	2:09.043	191	58.59	14:26:07.345	16	129.043	51967	58.79%
17	30.91%	55	96	Clunker Refuge Racing	1986	Nissan	300zr	Japan	26	A	234	0	2:09.172	153	58.53	14:25:35.593	14	129.172	51936	58.35%
19	21.35%	89	998	Loose Nutz	1980	Mazda	RX7	Japan	32	A	204	7	2:09.482	192	58.39	14:24:43.962	-16	129.482	51884	50.99%
20	14.49%	138	63	Battleship Red - United Sinking Ships Racing	1986	Nissan	300zx	Japan	26	A	140	0	2:09.692	117	58.29	14:24:19.303	-80	129.692	51859	35.05%
21	28.38%	74	32	Speedycop & The Gang of Outlaws	1985	Volvo	240	Sweden	27	A	218	0	2:09.730	148	58.27	14:23:35.859	-2	129.730	51816	54.60%
22	157.14%	14	40	Absolute LeMon Motorsports	1987	BMW	325	Germany	25	A	265	0	2:09.868	236	58.21	14:23:29.184	45	129.868	51809	66.44%
24	20.69%	116	186	Powered By Tequila	1987	Porsche	944	Germany	25	A	169	0	2:10.567	145	57.90	13:00:25.416	-51	130.567	46825	42.60%
25	16.23%	154	412	White Trash Barbie Racing	1995	Ford	Crown Vic	USA	17	A	112	0	2:10.716	91	57.84	13:15:00.496	-108	130.716	47700	28.26%
26	144.44%	18	647	Hit and Run Racing	1988	Mazda	X7 V8 Conversio	Japan	24	A	261	7	2:10.766	214	57.81	14:25:00.654	41	130.766	51901	65.89%
27	38.03%	71	917	Cajun Coonasses Team Soylent Green Egg	1992	Nissan	Sentra	Japan	20	A	220	0	2:10.902	107	57.75	14:23:17.908	0	130.902	51798	55.60%
28	933.33%	3	300	Area F1 51	1986	Nissan	300ZX	Japan	26	A	280	1	2:10.934	235	57.74	14:25:39.001	60	130.934	51939	70.78%
29	63.04%	46	92	Autosport LabRats	1989	Merkur	XR4Ti	USA	23	A	240	0	2:11.001	224	57.71	14:25:10.789	20	131.001	51911	60.70%
30	34.88%	86	12	Pit Crew Revenge 2	1990	Honda	Wagovan	Japan	22	A	207	0	2:11.011	163	57.71	14:23:28.717	-13	131.011	51809	52.36%
32	114.29%	28	178	The (Warhol) Factory Team	1989	Honda	CRX	Japan	23	A	254	-1	2:11.272	199	57.59	14:23:47.092	34	131.272	51827	64.37%
34	485.71%	7	944	Eco Challenge	1985	Porsche	944 Challenger	Germany	27	A	270	0	2:11.652	209	57.42	14:25:07.988	50	131.652	51908	68.62%
35	269.23%	13	330	Dust n Debris	1992	Plymouth	Duster	USA	20	A	266	0	2:11.656	248	57.42	14:23:33.295	46	131.656	51813	67.61%
36	97.30%	37	84	KGB Racing	1982	BMW	320i	Germany	30	A	247	0	2:11.687	141	57.41	14:26:13.115	27	131.687	51973	62.79%
37	54.41%	68	914	Cajun Coonasses Team Soylent Green Egg	1984	Volkswagen	Rabbit	Germany	28	A	223	0	2:11.814	162	57.35	14:23:26.568	3	131.814	51807	56.75%
38	36.19%	105	64	Auto Lemon Union	1986	BMW	528e	Germany	26	A	191	0	2:11.925	145	57.31	13:45:15.117	-29	131.925	49515	48.65%
39	39.00%	100	545	Team Naypex	1988	Volkswagen	Jetta	Germany	24	A	192	15	2:12.044	204	57.25	12:01:03.989	-28	132.044	43264	48.94%
40	105.26%	38	177	Team Sad-turn	1992	Saturn	SC2	USA	20	A	246	5	2:12.083	195	57.24	14:23:25.721	26	132.083	51806	62.73%
41	124.24%	33	189	Tired Iron Racing	1991	Mazda	Miata	Japan	21	A	251	0	2:12.210	140	57.18	13:44:52.037	31	132.210	49492	64.06%
42	32.06%	131	303	Scrappy Dogs Racing	1988	Honda	CRX	Japan	24	A	143	0	2:12.223	73	57.18	14:23:31.002	-77	132.223	51811	36.50%
43	107.50%	40	4	Cosmorita Cowboys w/the people of Walma	1983	Porsche	944	Germany	29	A	245	0	2:12.316	168	57.14	14:24:56.869	25	132.316	51897	62.58%
44	61.11%	72	88	Gangrene Racing	1986	BMW	535i	Germany	26	A	220	1	2:12.411	215	57.09	14:23:47.708	0	132.411	51828	56.24%
45	35.16%	128	171	Too Stupid To Know Better	1985	Volvo	740 Turbo	Sweden	27	A	149	0	2:12.820	76	56.92	14:16:27.472	-71	132.820	51387	38.21%
47	313.33%	15	75	Scuderia Limoni	1988	Alfa Romeo	Milano	Italy	24	A	264	0	2:13.033	192	56.83	14:25:58.996	44	133.033	51959	67.80%
48	32.21%	149	120	White Trash Barbie Racing II	1995	Acura	Integra	Japan	17	A	125	6	2:13.278	129	56.72	12:00:41.610	-95	133.278	43242	32.16%
51	65.38%	78	110	The White Ricers	1999	Honda	Accord	Japan	13	A	217	8	2:13.533	154	56.62	14:24:22.409	-3	133.533	51862	55.94%
52	260.00%	20	188	Ace Pump Racing	1994	BMW	325i	Germany	18	A	258	0	2:13.568	199	56.60	14:23:53.210	38	133.568	51833	66.53%
54	42.52%	127	812	Team Sad-turn	1993	Saturn	SC2	USA	19	A	150	55	2:13.631	164	56.57	14:25:05.518	-70	133.631	51906	38.70%
56	35.00%	160	431	Fast Food Racing	1986	BMW	325e	Germany	26	A	36	50	2:13.844	58	56.48	14:25:38.603	-184	133.844	51939	9.30%
58	38.41%	151	942	Porch racing	1989	Porsche	944	Germany	23	A	120	0	2:13.994	94	56.42	14:24:23.442	-100	133.994	51863	31.04%
59	184.38%	32	314	Sumbitch Racing	1987	Volkswagen	Golf	Germany	25	A	252	0	2:14.057	137	56.39	14:25:41.670	32	134.057	51942	65.22%
61	42.96%	142	999	5 Point slow	1986	Ford	Mustang	USA	26	A	133	0	2:14.295	65	56.29	13:33:39.289	-87	134.295	48819	34.48%
62	53.91%	115	941	Red Baron	1984	Porsche	944	Germany	28	A	170	0	2:14.340	150	56.28	10:32:44.608	-50	134.340	37965	44.90%
63	105.00%	60	21	Flash Racing	1985	Mazda	RX7	Japan	27	A	231	0	2:14.467	183	56.22	14:26:08.347	11	134.467	51968	59.97%
64	61.54%	104	106	Late for Tea	1991	Mazda	Miata	Japan	21	A	192	0	2:14.520	158	56.20	14:25:26.324	-28	134.520	51926	49.86%
65	94.20%	69	170	Team Fugawi	1991	Toyota	MR2	Japan	21	A	223	0	2:14.560	178	56.18	14:25:04.350	3	134.560	51904	57.93%
66	286.96%	23	400	OLD Fast Auto Race Team & Sons 2	1986	Audi	4000	Germany	26	A	258	0	2:14.587	234	56.17	14:26:00.547	38	134.587	51961	67.04%
69	265.38%	26	158	Flying Scotsmen	1985	BMW	325e	Germany	27	A	255	0	2:14.665	184	56.14	14:04:01.862	35	134.665	50642	66.29%
70	411.76%	17	17	Bunny With Or Without A Pancake On Its He	1983	Volkswagen	Rabbit	Germany	29	A	261	0	2:14.816	166	56.08	14:24:42.744	41	134.816	51883	67.93%
75	60.98%	123	45	E=McHammered	1987	BMW	E30	Germany	25	A	155	0	2:15.291	146	55.88	13:52:14.825	-65	135.291	49935	40.48%
76	115.15%	66	159	Delinquent Road Hazards	1990	Mazda	Miata	Japan	22	A	224	0	2:15.331	172	55.86	14:23:36.416	4	135.331	51816	58.52%
80	275.86%	29	5	Rotary Rooter	1986	Mazda	RX7	Japan	26	A	254	5	2:15.594	148	55.75	14:25:33.648	34	135.594	51934	66.49%
79	64.75%	122	138	Historically Hopeless	1987	Toyota	Supra	Japan	25	A	158	7	2:15.594	136	55.75	14:23:43.584	-62	135.594	51824	41.36%
81	506.25%	16	259	Flying Scotsmen II	1987	BMW	325e	Germany	25	A	262	0	2:15.599	185	55.75	14:25:01.919	42	135.599	51902	68.59%

82	273.33%	30	115	Off-the-Scale	1985	Mazda	RX7	Japan	27	A	252	1	2:15.696	227	55.71	14:23:23.488	32	135.936	51803	66.02%
83	162.75%	51	902	Rooster Juice Racing	1979	Porsche	924	Germany	33	A	236	0	2:15.830	186	56.66	14:24:24.541	16	135.630	51865	61.89%
85	149.12%	57	555	Judge Busters	1986	BMW	325e	Germany	26	A	233	0	2:15.884	221	56.64	14:24:21.073	13	135.884	51861	61.12%
87	177.55%	49	127	SmorgasBorg	1987	Porsche	944	Germany	25	A	237	0	2:15.917	231	56.62	14:24:10.346	17	135.917	51850	62.19%
90	92.78%	97	33	S&M Racing	1991	Volvo	740 wagon	Sweden	21	A	196	-1	2:16.163	185	55.52	12:34:17.344	-24	136.163	45257	51.52%
93	87.74%	106	102	White Trash Ken Racing	2002	Saturn	SC2	USA	10	A	191	2	2:16.426	149	55.41	14:25:31.927	-29	136.426	51932	50.31%
94	93.07%	101	101	10th scale racers	1986	Toyota	MR2	Japan	26	A	192	0	2:16.452	150	55.40	14:23:50.933	-28	136.452	51831	50.58%
95	65.07%	146	525	If It's Not Punk It's Junk GP	1992	BMW	525i	Germany	20	A	126	6	2:16.866	130	55.24	7:55:20.790	-94	136.866	28521	33.29%
97	156.45%	62	10	Team Bavarian Ranchero	1973	Ford	Ranchero	USA	39	A	228	0	2:17.344	171	55.04	14:24:13.179	8	137.344	51853	60.45%
98	316.13%	31	425	Clostown Road Show	1990	BMW	325i	Germany	22	A	252	2	2:17.592	217	54.95	14:23:24.654	32	137.592	51805	66.94%
99	825.00%	12	66	Clueless Party Vikings Vintage Racers Group	1986	Ford	Mustang	USA	26	A	267	0	2:17.716	224	54.90	14:24:13.650	47	137.716	51854	70.99%
101	127.85%	79	900	Team BIL	1979	Saab	900	Sweden	33	A	217	0	2:17.886	185	54.83	14:24:55.745	-3	137.886	51896	57.76%
103	79.84%	129	391	The Tartan Brigade	1981	Nissan	280ZX	Japan	31	A	148	0	2:18.240	145	54.68	9:28:03.322	-72	138.240	54083	39.50%
106	113.98%	93	910	Year of the Dragon!!	1986	Porsche	944	Germany	26	A	198	5	2:18.675	137	54.52	14:20:11.750	-22	138.675	51612	53.01%
108	183.05%	59	119	Brahma Bull Bomberos Racing	1986	BMW	325e	Germany	26	A	231	0	2:18.724	186	54.50	14:25:44.666	11	138.724	51945	61.87%
109	83.85%	130	34	Team California Mile	1984	Alfa Romeo	GTV-6	Italy	22	A	147	3	2:18.945	141	54.41	13:31:14.329	-73	138.945	48674	39.43%
110	80.88%	136	13	Stacks On CRX	1990	Honda	CRX	Japan	28	A	141	0	2:18.957	75	54.41	14:24:15.044	-79	138.957	51855	37.83%
112	94.12%	119	746	flailing lizards	1999	Ford	Escort ZX2	USA	13	A	165	0	2:19.122	161	54.34	10:46:12.982	-55	139.122	38773	44.32%
114	91.94%	124	420	Grapes of Wrath	1986	Volkswagen	Golf	Germany	26	A	152	5	2:19.826	146	54.07	11:34:01.978	-68	139.826	41642	41.03%
122	254.17%	48	196	Clunker Refuge Racing II (Type D)	1992	Mazda	Miata	Japan	20	A	237	0	2:20.749	215	53.71	14:24:08.566	17	140.749	51849	64.40%
123	83.11%	148	338	Frankenstang Racing	1985	Ford	Mustang	USA	27	A	126	0	2:20.757	122	53.71	11:10:59.367	-94	140.757	40259	34.24%
127	83.01%	153	833	Milk Maidens	2001	Chevrolet	Camaro	USA	11	A	114	0	2:21.378	69	53.47	14:24:52.837	-106	141.378	51893	31.11%
138	143.75%	96	82	Back to the Crapper	1987	Toyota	MR2	Japan	25	A	197	0	2:23.287	139	52.76	14:26:03.212	-23	143.287	51963	54.49%
140	97.90%	143	289	Tired Iron Racing	1988	Honda	CRX	Japan	24	A	131	2	2:23.341	129	52.74	8:24:55.571	-89	143.341	30296	36.25%
141	112.80%	125	37	Caffeine Unlimited	1987	BMW	325i	Germany	25	A	152	0	2:23.386	127	52.72	14:26:10.289	-68	143.386	51970	42.08%
157	100.00%	157	27	Speedchmp Racing	1980	Jeis Brenner Wagon	RBW7	ERR	32	A	96	6	2:30.440	101	50.25	8:28:55.228	-124	150.440	30535	27.88%
158	109.72%	144	924	OLD Fast Auto Race Team & Sons	1987	Porsche	924	Germany	25	A	130	0	2:30.692	126	50.17	9:06:46.724	-90	150.692	32807	37.82%
163	101.24%	161	911	White Trash Ken Racing II	1995	Acura	Integra	Japan	17	A	33	3	2:52.208	34	43.90	3:37:35.013	-187	172.208	13055	10.97%
164	100.00%	164	99	Ecurie Ecrappe	1971	Alfa Romeo	900 Turbo	Italy	41	A	20	0	2:54.298	14	43.37	3:29:26.722	-200	174.298	12567	6.73%
170	100.59%	169	97	Saab Story	1997	Saab	919 Turbo	Sweden	15	A	-2	2	0	0	0	25:43.194	-222	0	0	0.00%
11	110.00%	10	51	Uber Vogel: Hans Am	1987	Mercedes	190e	Germany	25	B	269	0	2:08.103	225	59.02	14:24:17.484	49	128.103	51857	66.53%
15	8.77%	171	29	Fukushima Debris	2004	Mazda	RX8	Japan	8	B	-999	5E+08	2:08.934	158	58.63	13:16:40.870	-1219	128.934	47801	-248.67%
18	16.67%	108	26	Team Apathy	1989	Saab	9000	Sweden	23	B	189	2	2:09.249	151	58.49	14:23:27.705	-31	129.249	51808	47.16%
23	67.65%	34	820	Audi Style Racing	1982	Audi	Coupe GT	Germany	30	B	251	1	2:09.916	167	58.19	14:24:37.496	31	129.916	51877	62.95%
31	88.57%	35	58	Panting Polar Bear Racing	1997	Ford	Crown Vic	USA	15	B	250	0	2:11.233	214	57.61	14:24:31.788	30	131.233	51872	63.34%
33	34.74%	95	49	Idiotarod Racing	1991	Mazda	Miata	Japan	21	B	197	2	2:11.497	175	57.49	14:24:25.416	-23	131.497	51865	50.01%
46	59.74%	77	182	The Black Flags	1983	Toyota	Celica Supra	Japan	29	B	217	0	2:12.951	149	56.86	14:24:04.565	-3	132.951	51845	55.70%
49	50.00%	98	125	MOPAX	1974	Plymouth	Duster	USA	38	B	196	0	2:13.430	175	56.66	14:23:48.738	-24	133.430	51829	50.49%
50	62.50%	80	93	Wyotech Racing	1989	Ford	Probe	USA	214	5	2:13.516	214	56.62	14:25:18.090	-6	133.516	51918	55.16%		
53	135.90%	39	76	Battle Born Motorsports	1991	Chevrolet	Camaro	USA	21	B	246	0	2:13.588	136	56.59	14:24:40.361	26	133.588	51880	63.44%
55	117.02%	47	90	Chump Ganasee Target Racing	1996	Eagle	Talon	USA	16	B	239	0	2:13.674	192	56.56	14:23:32.043	19	133.674	51812	61.68%
57	51.35%	111	800	LazyBug Racing	1984	Porsche	944	Germany	28	B	184	1	2:13.958	123	56.44	14:23:30.928	-36	133.958	51811	47.58%
60	49.59%	121	57	The Hot Dogs	1987	Chrysler	Conquest	USA	25	B	159	0	2:14.081	123	56.38	14:23:59.466	-61	134.081	51839	41.16%
67	148.89%	45	369	Team V	1996	Mitsubishi	Eclipse	Japan	16	B	241	0	2:14.616	137	56.16	14:24:10.813	21	134.616	51851	62.63%
68	357.89%	19	245	Bernal Dads Racing	1984	Volvo	245	Sweden	28	B	260	0	2:14.655	205	56.14	14:24:49.713	40	134.655	51890	67.59%
71	78.02%	91	70	Rustang	1971	Ford	Mustang	USA	41	B	202	0	2:14.884	176	56.05	13:42:47.808	-18	134.884	49368	52.60%
72	118.03%	61	16	BBQ Rubber Chicken Picatta	1995	Volvo	0.00362934363	Sweden	17	B	228	3	2:14.921	226	56.03	14:23:50.017	8	134.921	51830	59.39%
73	1460.00%	5	969	Sierra Auto Recycling	2000	Ford	Crown Vic	USA	12	B	272	0	2:14.975	215	56.01	14:23:38.224	52	134.975	51818	70.88%
74	82.22%	90	666	lWannaRoc	1989	Chevrolet	Camaro	USA	23	B	263	0	2:15.122	190	55.95	14:25:12.116	-17	135.122	51912	52.95%
77	700.00%	11	112	Oldsmember	1979	Oldsmobile	Agency 98 Brough	USA	33	B	208	0	2:15.412	210	55.83	14:26:02.127	48	135.412	51962	70.06%
84	74.34%	113	83	Dirty Duck Racing	1983	Volkswagen	Rabbit	Germany	29	B	178	5	2:15.863	174	55.64	11:05:12.841	-42	135.863	39913	46.69%
86	78.18%	110	38	Team Steam	1988	General Motors	IROC	ERR	24	B	185	0	2:15.901	122	55.63	14:23:58.055	-35	135.901	51838	48.54%
88	75.21%	117	3	iFixit Goes A Racini!	1992	Volvo	245dI	Sweden	20	B	169	0	2:16.078	100	55.56	14:23:52.008	-51	136.078	51832	44.40%
89	211.90%	42	430	Petty Cash Racing	1989	Jeep	Cherokee	USA	23	B	244	0	2:16.158	228	55.52	14:24:39.148	24	136.158	51879	64.14%
91	211.63%	43	808	Licensed To lLL	1984	Chevy	S10	USA	28	B	244	0	2:16.388	191	55.43	14:25:25.110	24	136.388	51925	64.25%
92	100.00%	92	48	Bridgeway Bombers	1978	Alfa Romeo	Spider	Italy	34	B	200	0	2:16.399	199	55.43	12:10:33.239	-20	136.399	43833	52.67%
96	128.00%	75	928	Dirr Poor-sche Racing	1982	Porsche	928	Germany	30	B	218	0	2:17.040	132	55.17	14:23:45.368	-2	137.040	51825	57.67%
100	243.90%	41	94	Communists R Us	1982	BMW	E21 320is	Germany	30	B	244	0	2:17.775	194	54.87	14:24:28.031	24	137.775	51868	64.90%
102	86.44%	118	85	Snowballs Chance in Hell Racing	1985	Toyota	MR2	Japan	27	B	166	1	2:17.942	148	54.81	10:16:08.858	-54	137.942	38699	44.21%
104	110.64%	94	908	Easy 908/14	1973	Porsche	914	Germany	39	B	198	0	2:18.361	187	54.64	14:21:14.571	-22	138.361	51675	52.89%
105	61.76%	170	79	Chim Chim Racing	2004	Holden	Monaro	Australia	8	B	-999	2E+09	2:18.517	125	54.58	9:57:36.426	-1219	138.517	35856	-267.15%
111	79.86%	139	255	8-Bit Racing	1984	Nissan	300zx	Japan	28	B	140	0	2:18.992	97	54.39	14:24:33.203	-80	138.992	51873	37.57%
113	84.33%	134	74	B Team - Just Plain Stupid	1974	Lotus	Elite	England	28	B	142	0	2:19.294	59	54.27	14:25:43.321	-78	139.294	51943	38.19%
115	171.64%	67	243	Bernal Dads Racing II	1985	Mazda	243	Japan	27	B	224	2	2:20.316	129	53.88	14:24:20.303	4	140.316	51860	60.68%
117	118.18%	99	11	Pit Crew Revenge 2	1994	Honda	Civic coupe	Japan	18	B	195	0	2:20.454	162	53.83	13:42:13.949	-25	140.454	49334	52.88%
118	88.72%	133	50	Recession Racing	1988	Volkswagen	Scirocco													

137	652.38%	21	502	The Hasselhoffs	1992	Toyota	Paseo	Japan	20	C	258	0	2:22.592	205	53.02	14:24:41.692	38	142.592	51882	71.02%
139	198.57%	70	100	Occupy Pit Lane	1984	Toyota	Celica GT-S	Japan	28	C	222	0	2:23.326	140	52.75	13:59:12.997	2	143.326	50353	61.43%
142	107.58%	132	54	Bottom Cog	1987	Nissan	Sentra	Japan	25	C	142	1	2:23.822	136	52.56	10:29:27.004	-78	143.822	37767	39.43%
144	400.00%	36	210	B210 racing	1977	Datsun	B210	Japan	35	C	248	0	2:24.230	194	52.42	14:24:47.961	28	144.230	51888	69.05%
149	106.43%	140	59	Team Tinworm	1969	Austin	America	England	43	C	137	0	2:27.159	126	51.37	14:25:20.472	-83	147.159	51920	38.92%
153	242.86%	63	80	Billy Beer Malaise Forever Re-election Raci	1979	Ford	Futura	USA	33	C	226	0	2:28.123	116	51.04	14:24:05.976	6	148.123	51846	64.63%
154	101.32%	152	72	Dudes Ex Machina	1972	Plymouth	Valiant Scamp	USA	40	C	119	0	2:29.400	100	50.60	14:24:36.362	-101	149.400	51876	34.32%
155	109.93%	141	67	The Avengers	1967	Ford	Cortina	USA	45	C	134	0	2:29.402	128	50.60	12:22:49.855	-86	149.402	44570	38.65%
156	177.27%	88	36	Killer ZomBees	1977	MG	MGB	England	35	C	205	-1	2:29.820	185	50.46	14:25:48.674	-15	149.820	51949	59.29%
160	142.86%	112	28	Frak This Racing	1976	Datsun	280z	Japan	36	C	180	0	2:35.642	158	48.57	14:24:12.829	-40	155.642	51853	54.09%
161	97.58%	165	52	Crash Test Mummies	1978	MG	Roadster	England	34	C	13	0	2:45.589	11	45.66	10:24:11.876	-207	165.589	37452	4.16%
162	103.85%	156	91	Fiero Libre	1987	Pontiac	Fiero	USA	25	C	99	0	2:49.249	97	44.67	7:42:45.964	-121	169.249	27766	32.35%
166	99.40%	167	71	Ferdinandwertsch,tzungsgesellschaft	1971	Volkswagen	Super Beetle	Germany	41	C	10	0	3:00.164	9	41.96	14:14:47.953	-210	180.164	51288	3.48%
167	103.09%	162	73	S&M Racing	1973	Saab	Sonett	Sweden	39	C	23	0	3:07.318	5	40.36	12:19:40.232	-197	187.318	44380	8.32%
168	103.07%	163	31	Crash Test Mummies	1978	Ford	Fiesta	USA	34	C	22	0	3:17.993	17	38.18	6:28:09.837	-198	197.993	23290	8.41%
1	100.00%	1	111	Eyesore Racing	1993	Mazda	Miata	Japan	19	X	281	0	2:03.137	220	61.40	14:23:18.509	61	123.137	51799	66.80%
2	8.33%	24	595	Angry Hamster Racing	1971	Honda	Z600	Japan	41	X	256	2	2:04.741	157	60.61	14:23:21.152	36	124.741	51801	61.65%
78	312.00%	25	25	Stick Figure racing	1987	Toyota	MR2	Japan	25	X	256	0	2:15.524	237	55.78	14:25:56.281	36	135.524	51956	66.98%
169	101.81%	166	0	Team Pink Lloyd	1958	Lloyd	Alexander	England	54	X	10	0	3:26.748	1	36.57	7:40:58.054	-210	206.748	27658	3.99%